

**Did you know that for every 2.5 inches in height, a man's income increases by £1,600?**

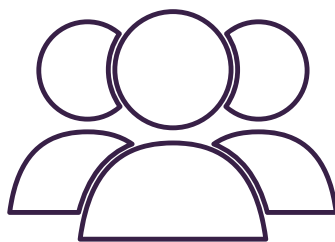


Nobody is consciously looking to promote tall men but the impact of **unconscious bias** can lead to us make decisions which aren't always rational or treat different people in different ways without realising it.



Tai Pawb's **Unconscious Bias Training** has been specifically developed for the housing sector.

It looks at a range of ways in which unconscious bias can affect how you do things, including how you respond to **tenant complaints**, who you **engage** with, **staff culture**, and your **recruitment practices**.

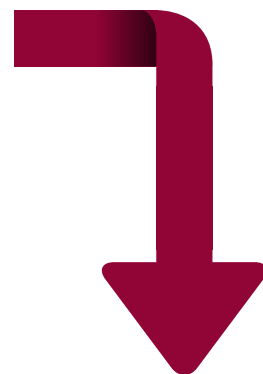


See next page for more information >>



## Our half day course helps organisations to:

- Understand what unconscious bias is
- Consider where unconscious bias comes from
- Think about our own unconscious bias
- Discuss where this matters in our organisation
- Identify how to address it and practical actions to take away



## Our full day course does all the above but also:

- Offers a more thorough exploration of the psychology detail, theory and academic findings
- Can be more closely tailored to your organisation and issues
- Includes specific exercises around your business delivery, with a focus on an area of your choice such as:
  - HR/Recruitment/Staff Development
  - Allocations
  - Anti-social behaviour
  - Tenant participation and engagement
  - Cultural change and harassment

## Who is this for?

The course is suitable for staff at any level or department in an organisation, and can be tailored to meet your needs.

It is available in-house for 12-15 members of staff per session.

## Cost

<b>Members</b>	half day £375	full day £695
<b>Non-members</b>	half day £500	full day £930

For more information, please contact:  
**info@taipawb.org** or **029 2053 7630**

